

Pathways to Permanency

Using Data to Help Move Children to Permanency

Judith Wildfire

October 2, 2008



Research on Factors that Influence Speed of Achieving Reunification

Summary of Factors Related to Reunification, by Child Age at Baseline^a

Factors	Age at baseline				
	Less than 7 months	7 months	3-5 years	6-10 years	11 or older
Child characteristics					
Gender		•	•	•	
Race	•				•
CBCL score				•	
Delinquency score					
Abuse type	•		•		
Family risk factors					
Recent arrest					
Domestic violence					
Substance abuse				•	
Trouble paying basic expenses					
Previous child welfare involvement					
Cumulative risk			•	•	
Agency or parent actions					
Parenting services	•				
Parental participation in developing case plan					
Initial kin placement				•	
Compliance with case plan	•	•	•		
Placed in same neighborhood					•
Frequency seeing mother					•

Source: Authors' calculations
 CBCL = Child Behavior Checklist.
 a. Not all variables are included in all age group models. See table 8-3 for a summary of variables in age-specific models.

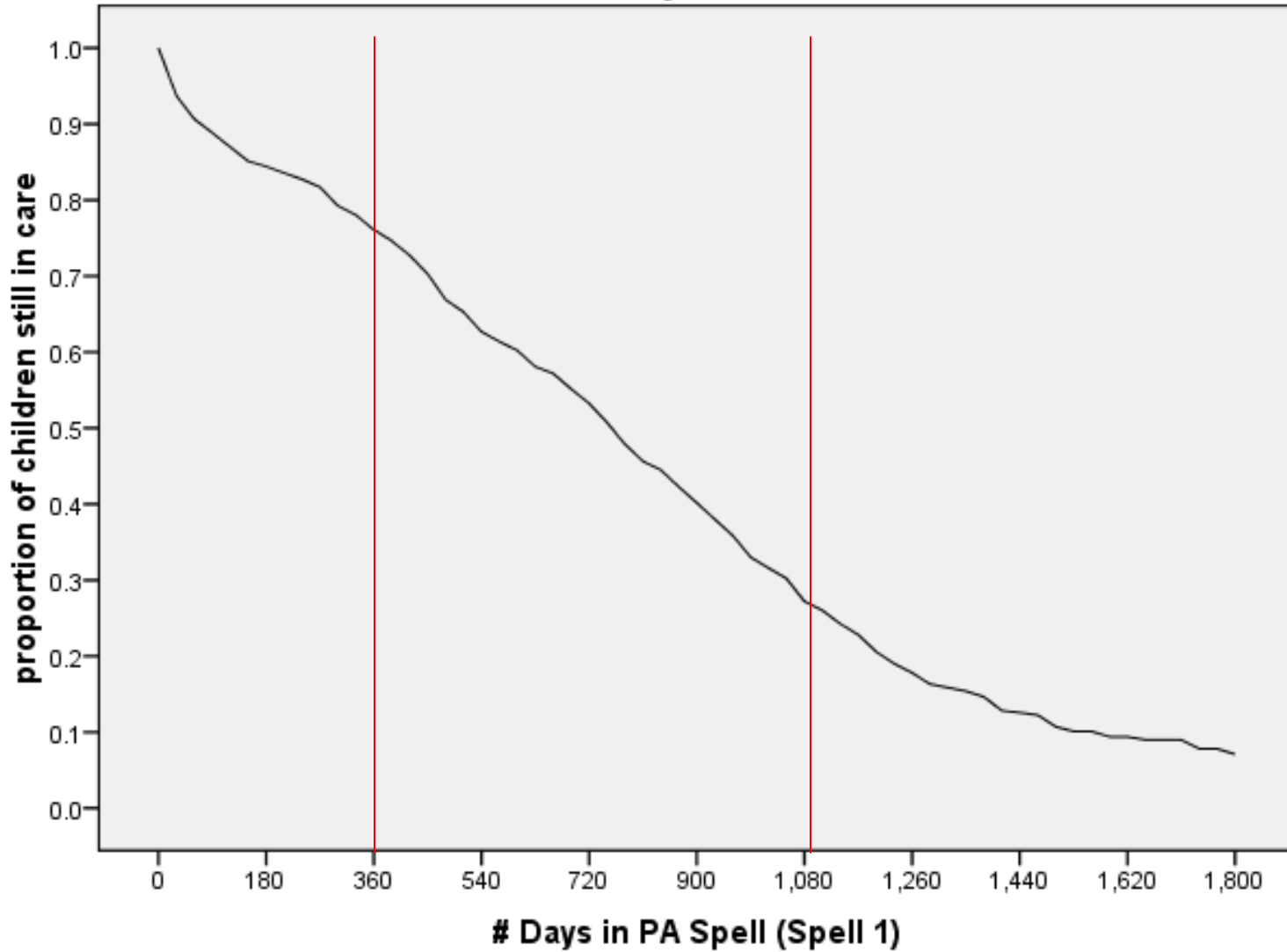
One Size does not fit all when it comes to permanency!

3 Areas of Analysis

1. Understand length of stay: identify length of stay groups

- What are characteristics of children in each group
- Determine permanency destinations (exit reasons) for each group
- Do additional analysis to understand the 'why?' for each group

Length of Stay: Proportion of Children Still in Care at different TimePoints after Entry



Identifying “Length of Stay” Groups

- Less than 1 month in placement – “short stayers”
- Between 1 month & 12 months
- Between 13 -36 months
- Over 36 months – “stuck in care”

Sample Data

941 children entered
out-of-home placement
for the first time in a 4 year
period of time
(July 1, 2002 – June 30, 2006)

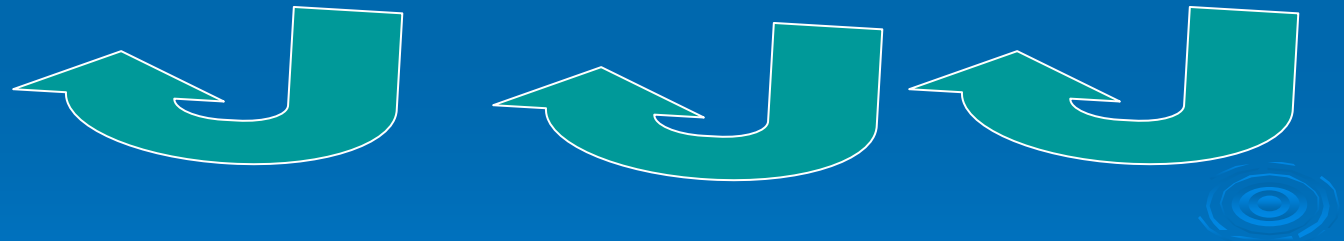
62 children
(7%) exited
in 1 month

179 children
(19%) left
Between 1 month
& 12 months

419 children
(45%) left between
13-36 months

87 children
(9%) left after
36 months

194 children
still in care



Questions:

- Who is in each of these groups?
- What type of permanency is achieved for children in each group?
- What must we do to move a child from 1 group to next?

Type of Perm?

941 children entered out-of-home placement for the first time in a 4 year period of time (July 1, 2002 – June 30, 2006)

62 children (7%) exited in 1 month

179 children (19%) left B'tween 1 month & 1 year

419 children (45%) left b'tween 1 and 3 years

87 children (9%) left after 3 years

194 children still in care

Almost all are reunification

Half are reunification

~1/4 are reunification

1/25 are reunification

1/3 with non-removal parent or relative

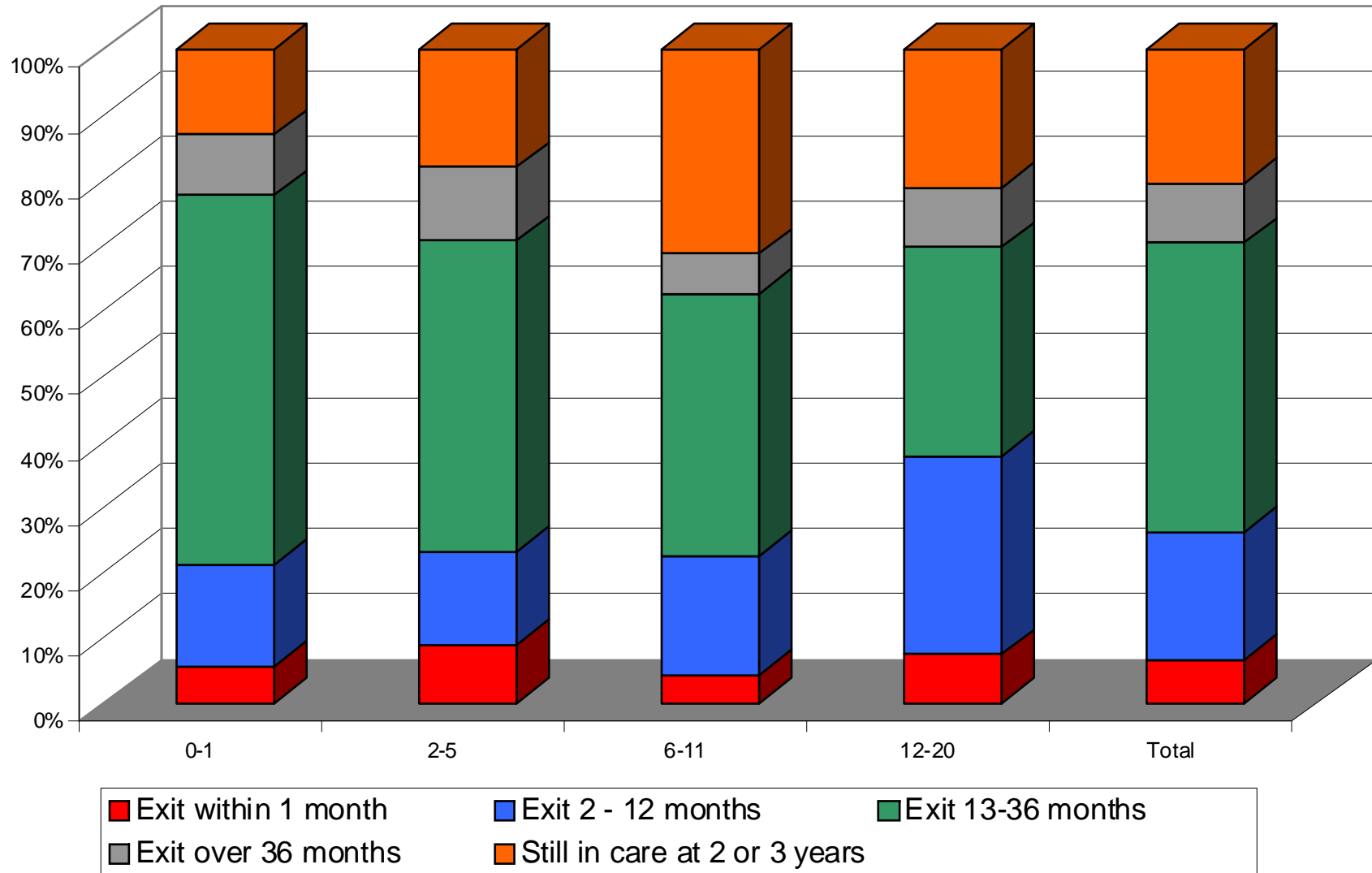
~1/6 with non-removal parent or relative

1/20 with non-removal parent or relative

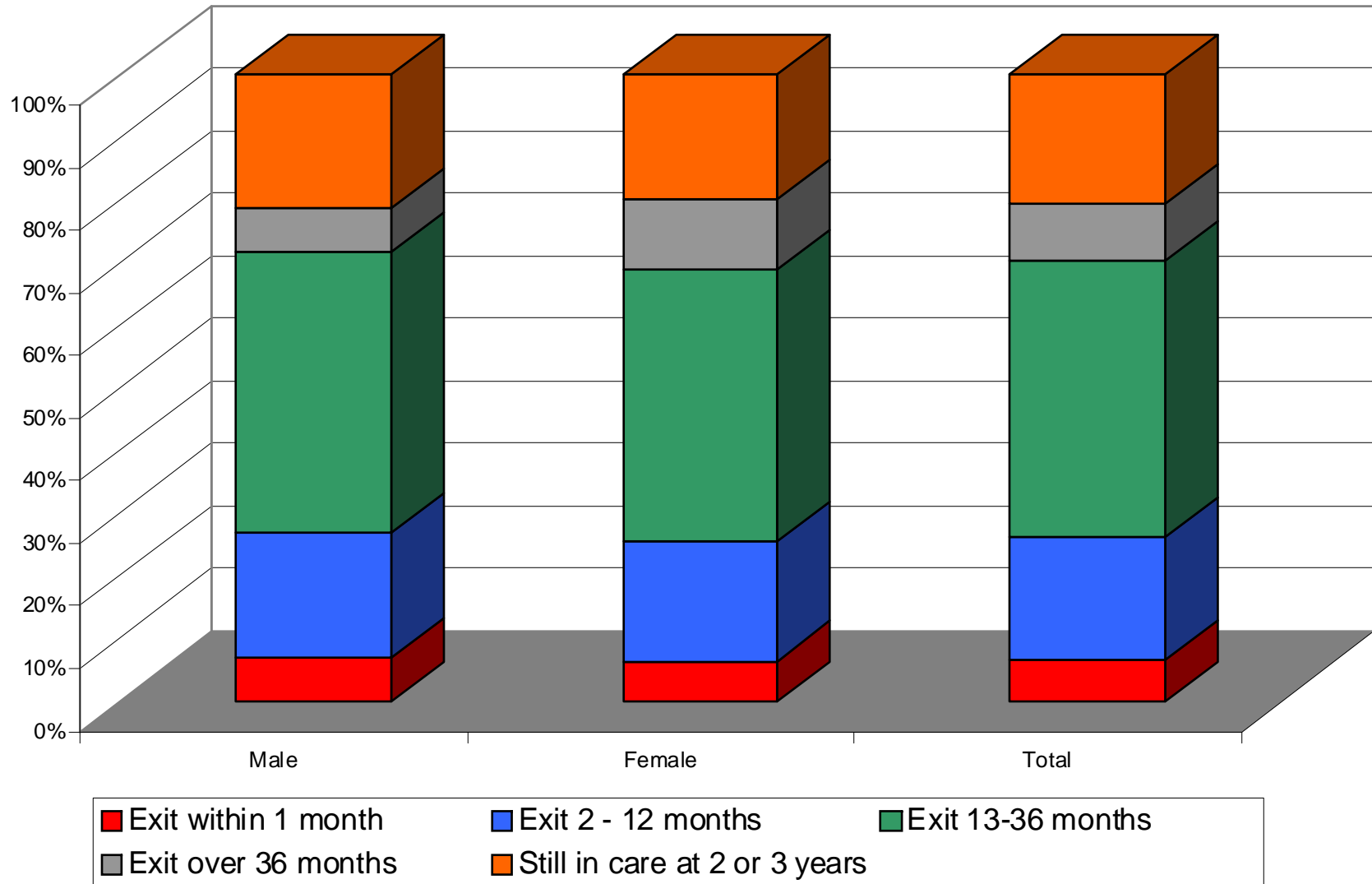
~ Half are adoption

3/4 are adoption

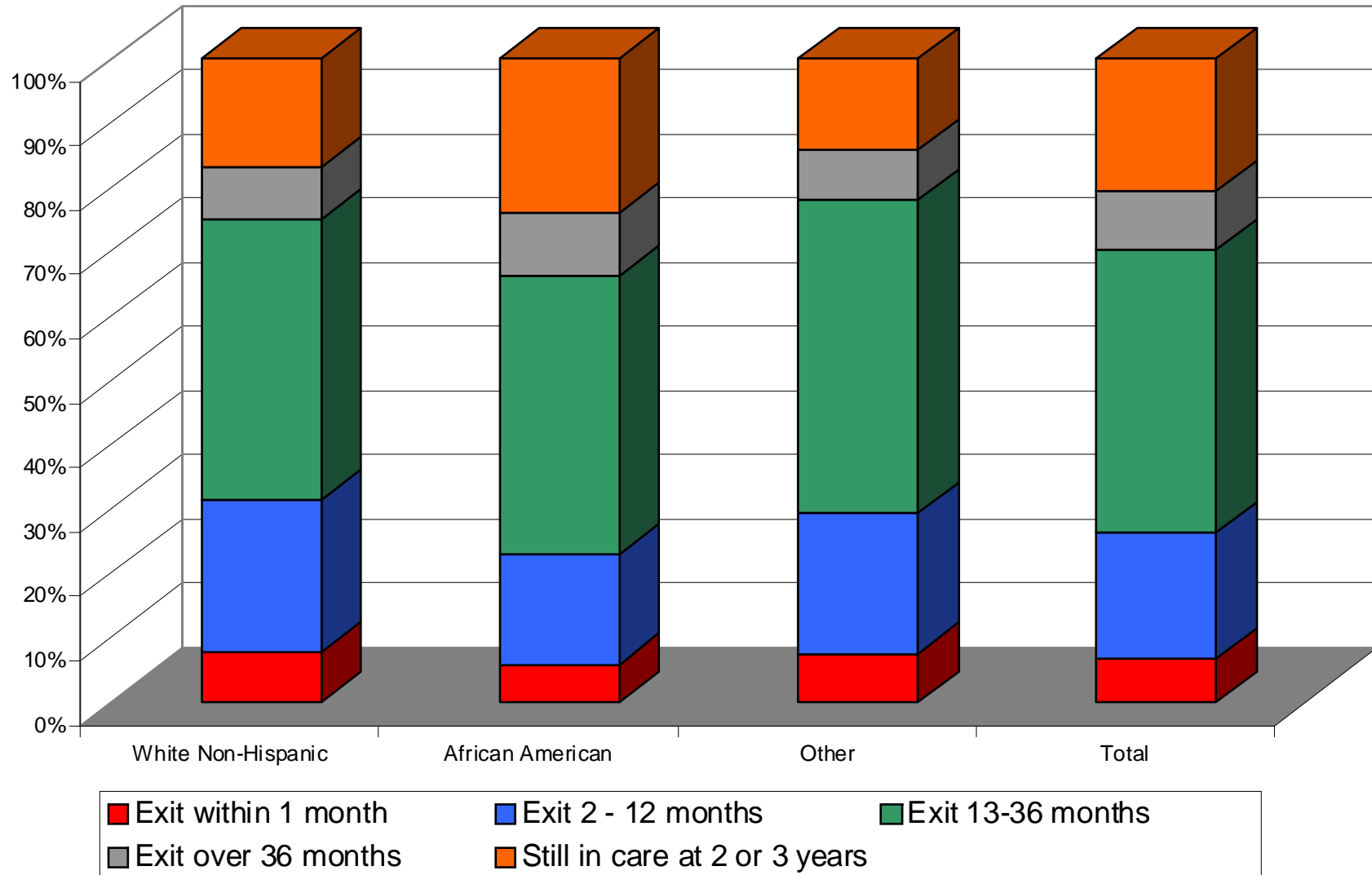
Length of Stay Groups by Age



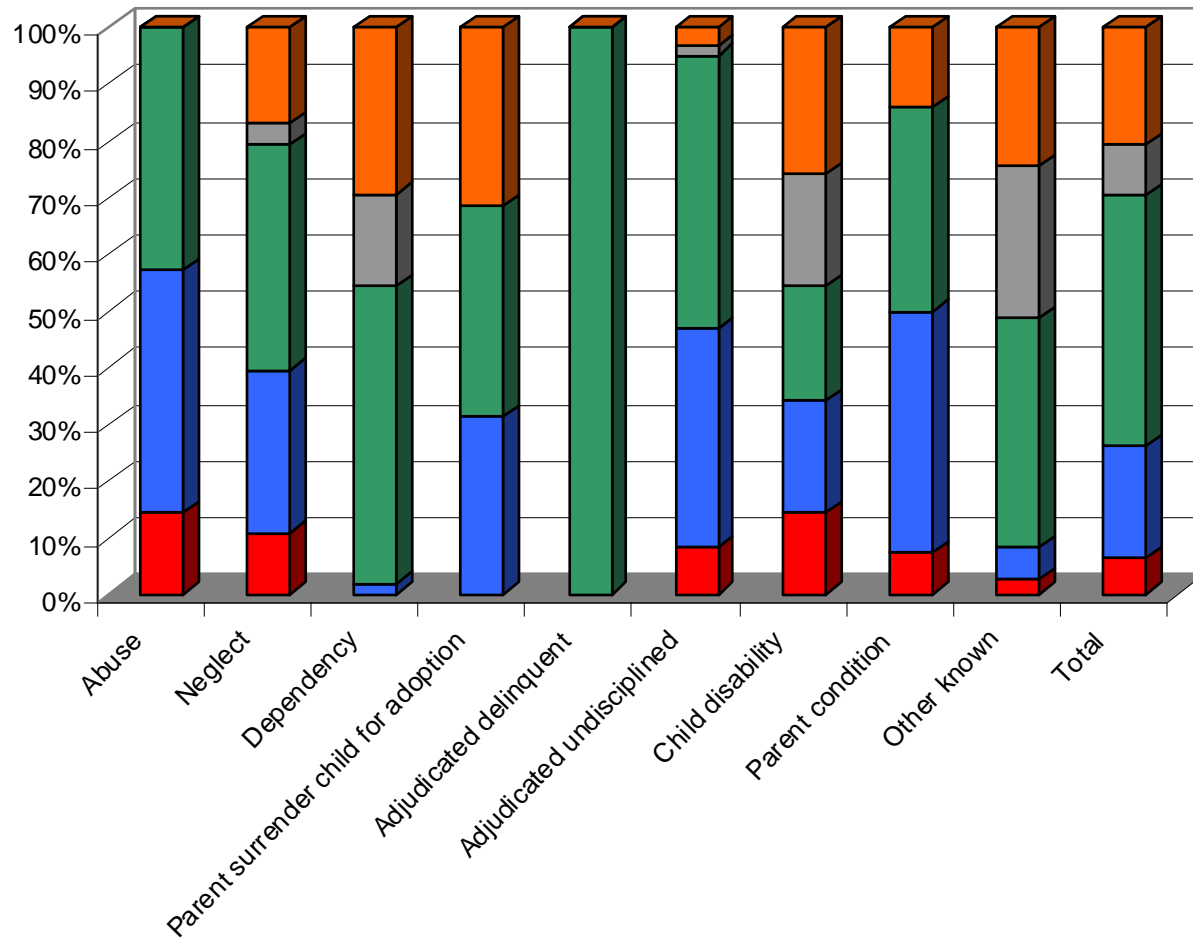
Length of Stay Groups by Gender



Length of Stay Groups by Race / Ethnicity



Length of Stay Groups by Reason for Placement



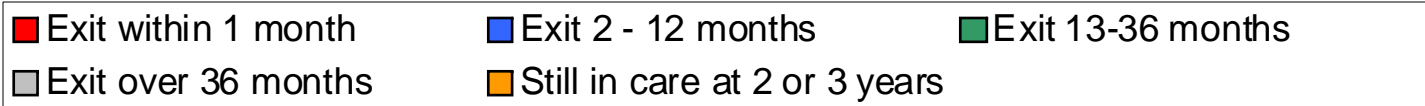
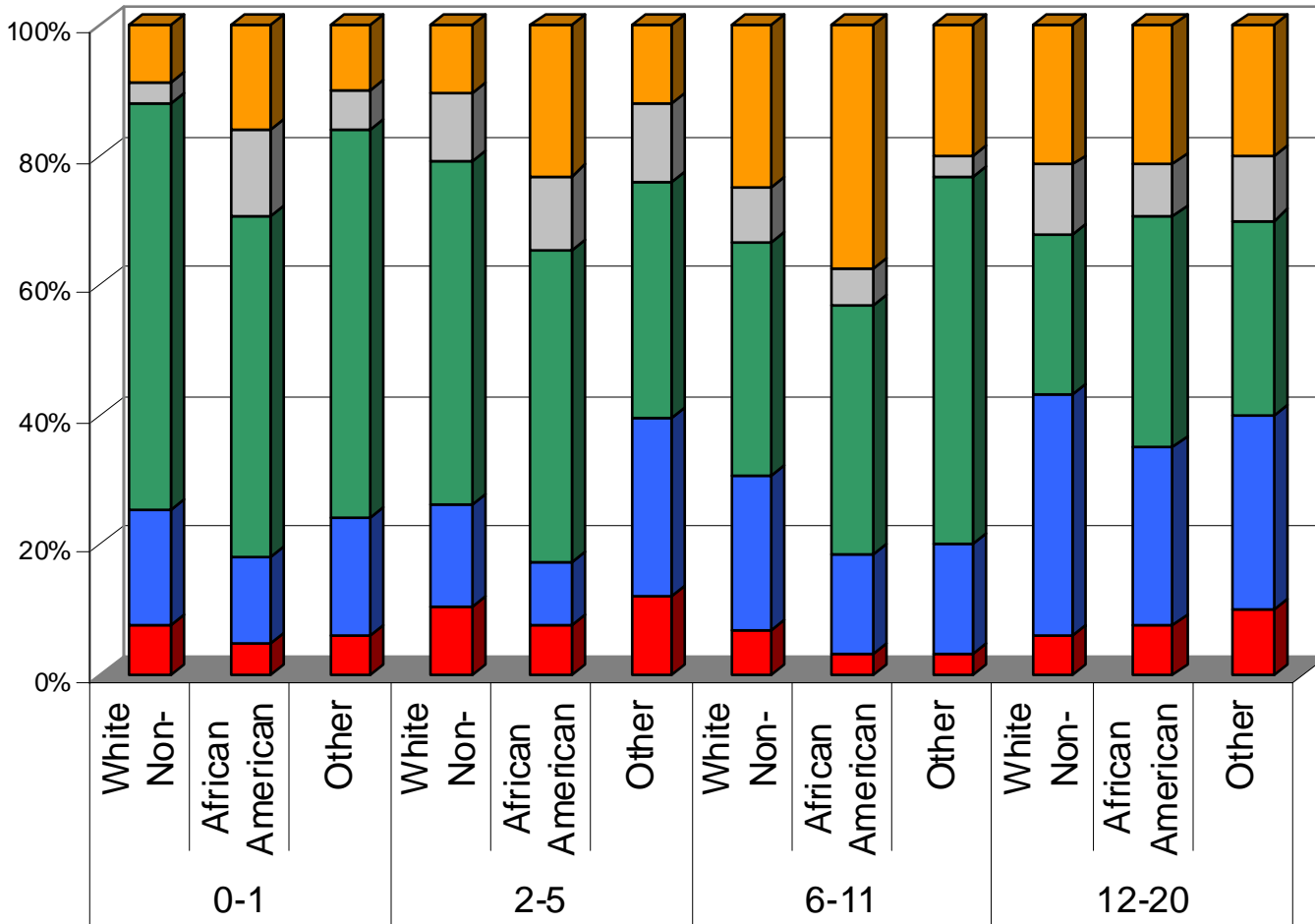
■ Exit within 1 month
■ Exit over 36 months

■ Exit 2 - 12 months

■ Exit 13-36 months

■ Still in care at 2 or 3 years

Length of Stay Groups by Age and Race



Summary

- Small % children who exit within 1 month to reunification
 - 2-5 year olds
 - Abuse, child disability and neglect

Strategy for achieving permanency: Maintain in own home??

Summary

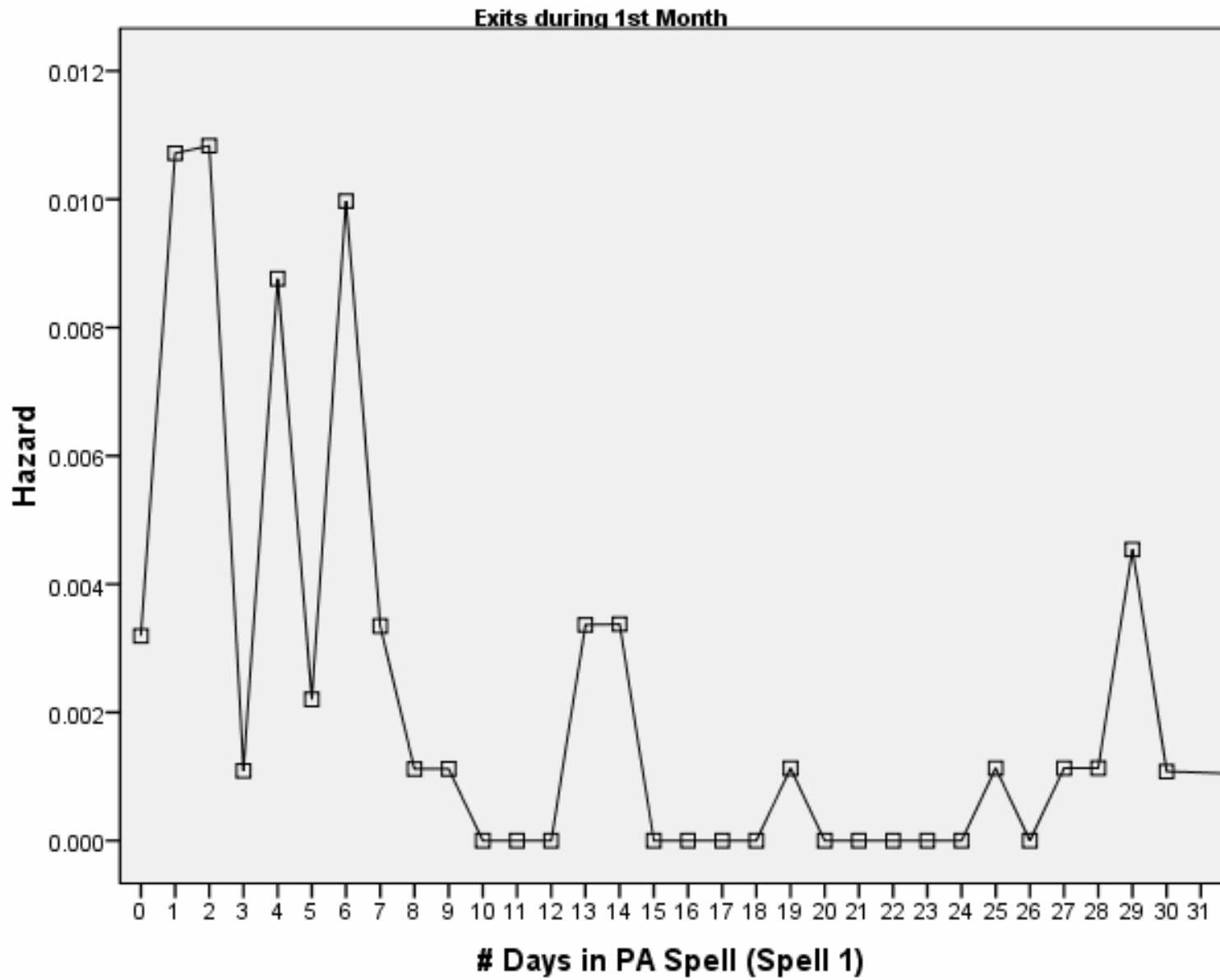
- Children who stay longer than 3 years
 - 6-11 year olds
 - Female
 - African American
 - Dependency, child disability, parent condition

Strategy for moving to permanency more quickly: create flag for AA, 6-11 year olds when entering 2nd year of care

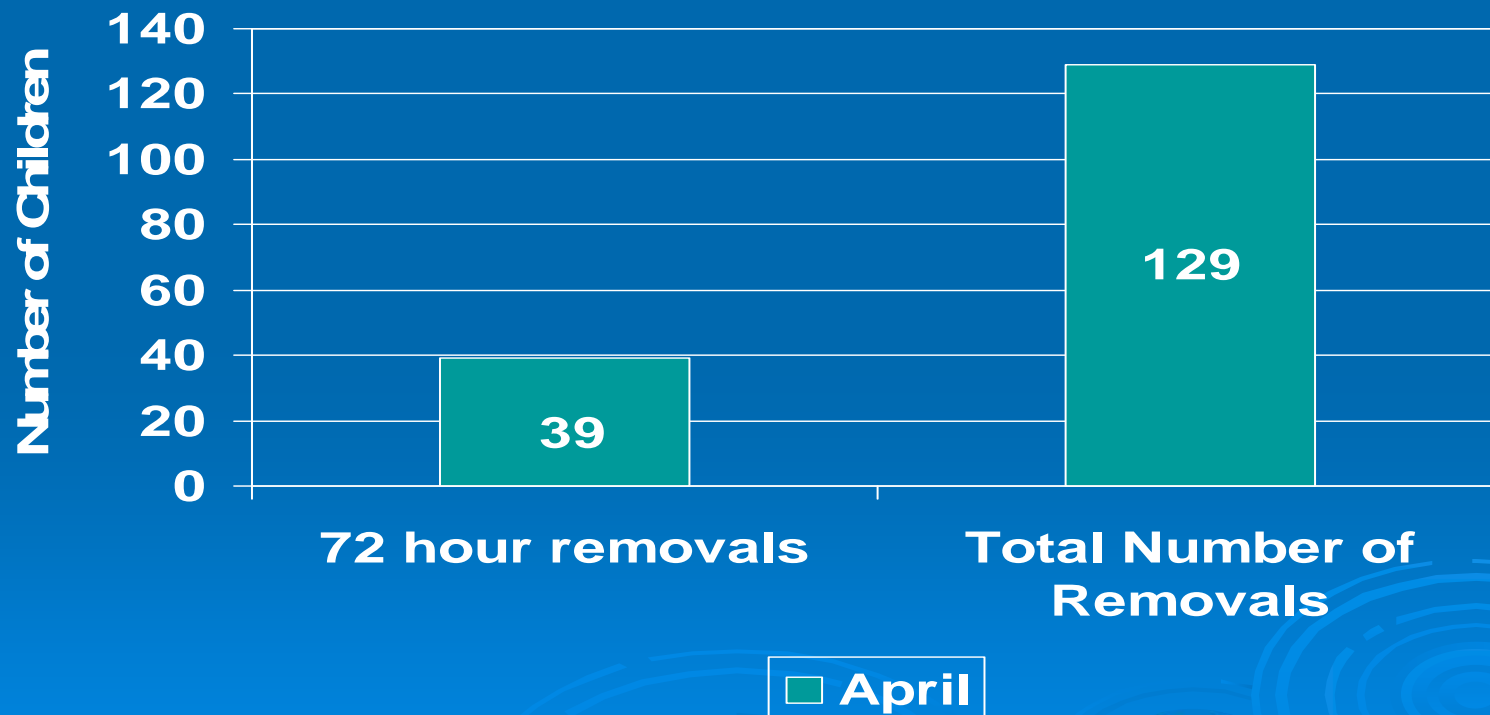
Sample analysis:

Why did 627 Children exit placement
within 1 month?

Permanency for these children may be
to remain in own home



After Hours Removal for 1 month
*30% of the removals were children removed
for 72 hours or less



For the children removed for 72 hours

- There were a total of 39 children. 32 children had a TDM (82%). 6 were returned without a TDM for reasons unknown.
- Of those 32 children removed for 72 hours that had a TDM the recommendation for 26 was return home (81%) and OOH Dependency for 6 (19%)

➤ A review was conducted on the 39 children that were removed by AHIT and in placement for 72 hours or less

- 8 children could have potentially not been placed if agency had more contact with relatives
- 9 children had parents who were arrested and agency had no contact with the parents to ask about relative placements
- 5 children were removed, returned by the field and re-entered care within 7 days
- 5 children had other circumstances such as being citizens of Mexico and returning, children returning to other states as they had run from those states
- 6 children either had parents who refused to have them return home or whose parents were not at home at the time of initial contact
- 6 children had circumstances where the parents had mental health or substance abuse issues, the guardian could not be located or there was domestic violence issues with the guardian or the child had injuries and the PD was involved and the perpetrator could not be identified at the time of initial contact

Qualitative Data Identified Groups of “Short Stay” Children & Different Interventions

- Could have avoided placement with additional information (e.g. parents arrested, more info about relatives immediately available)
- Exited too early and subsequently reentered
- Agency found needed services in a short time and child was able to return home quickly (e.g. parents with mental health, substance abuse issues)

3 Areas of Analysis

1. Identify length of stay groups

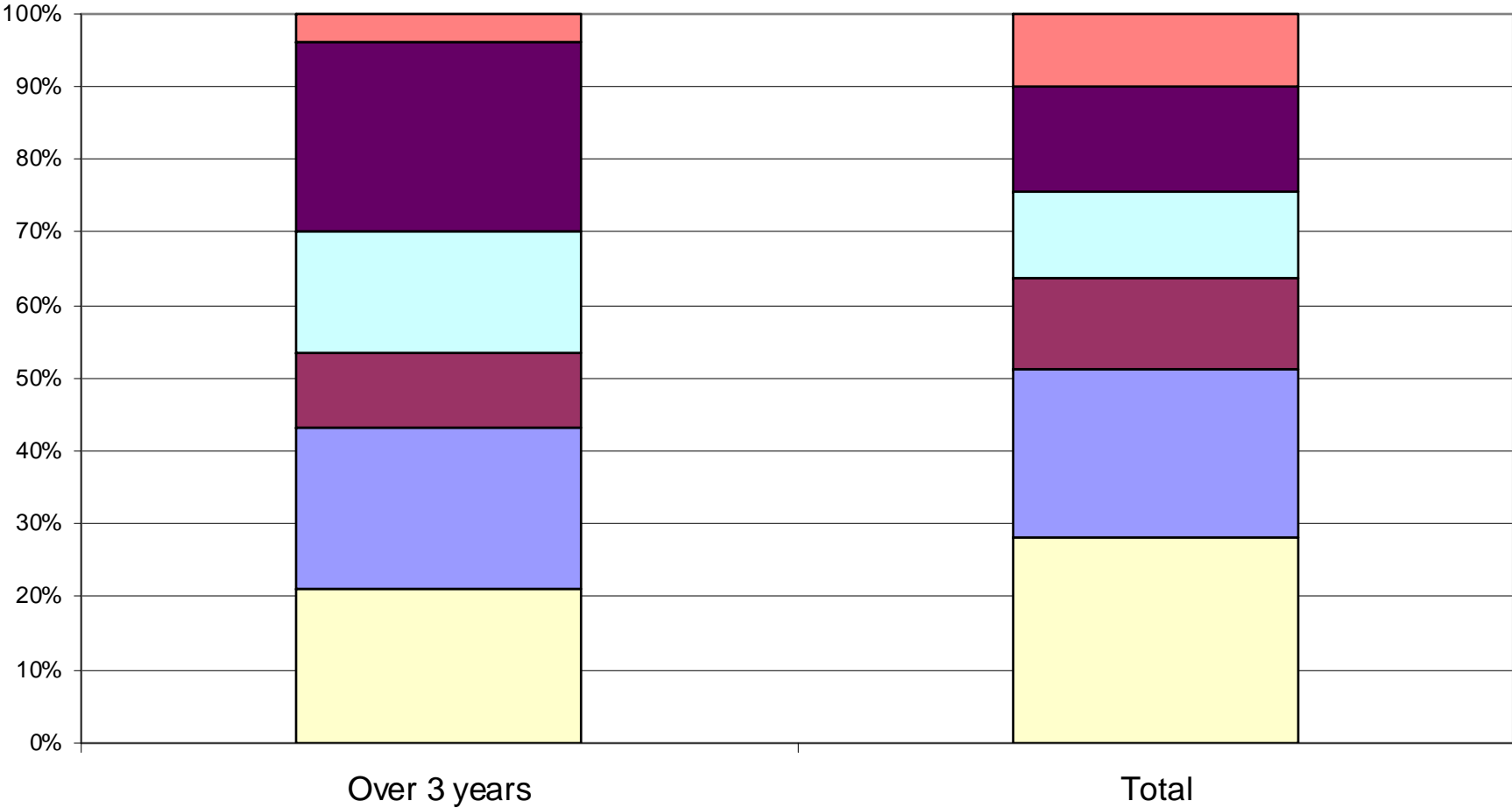
- Understand characteristics of children in each group
- Determine permanency destinations (each reasons) for each group
- Do additional analysis to understand the ‘why?’ for each group

2. Identify Group of Children who are “ Long Stayers”

- Determine time point at which 75% of children have exited placement
- Understand characteristics of these children
- Determine permanency destinations

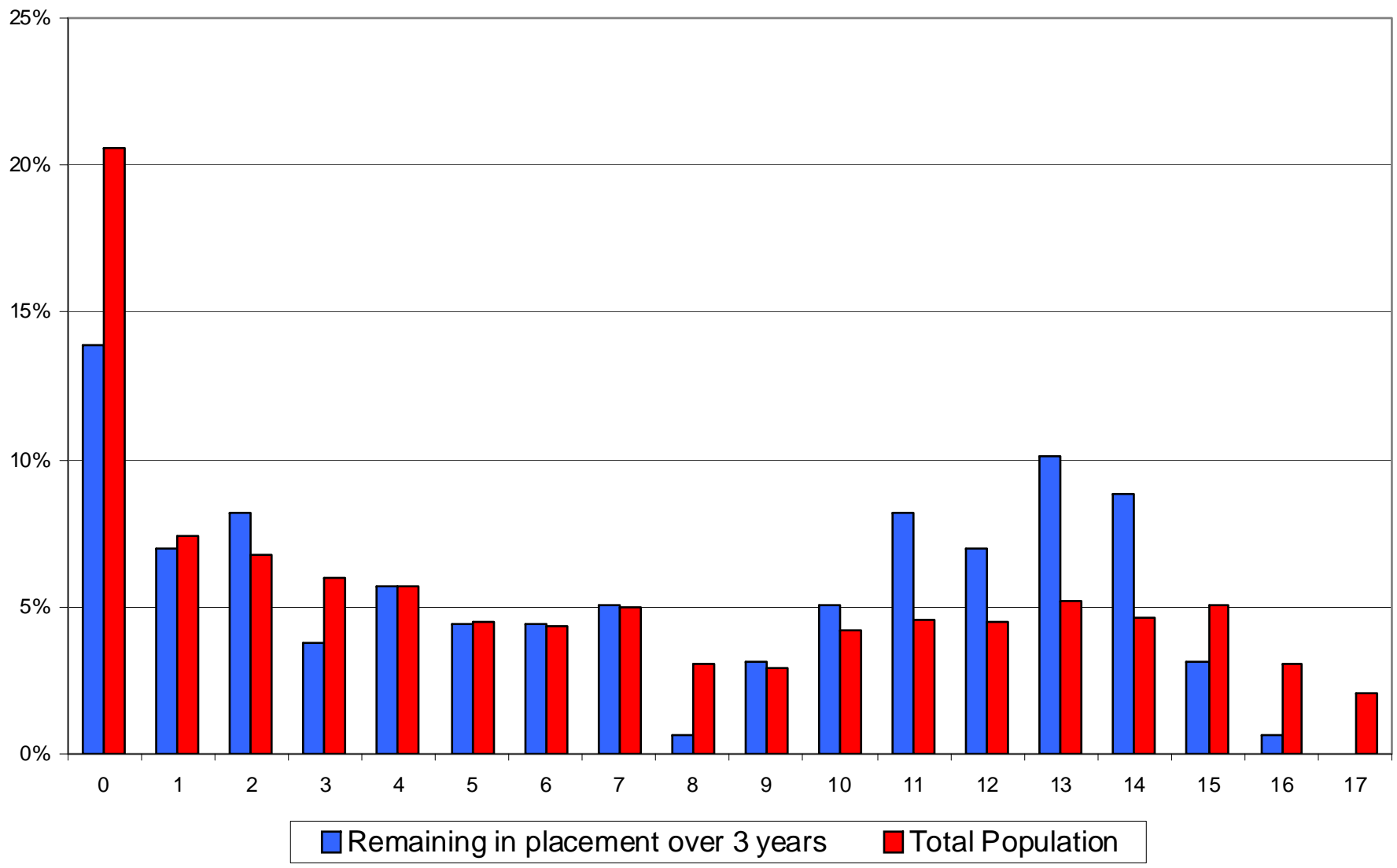
What Happens to Children who are in Placement at 3-year Mark?

Age Distribution for Children in Care over 3 Years Compared to Distribution of Total Population

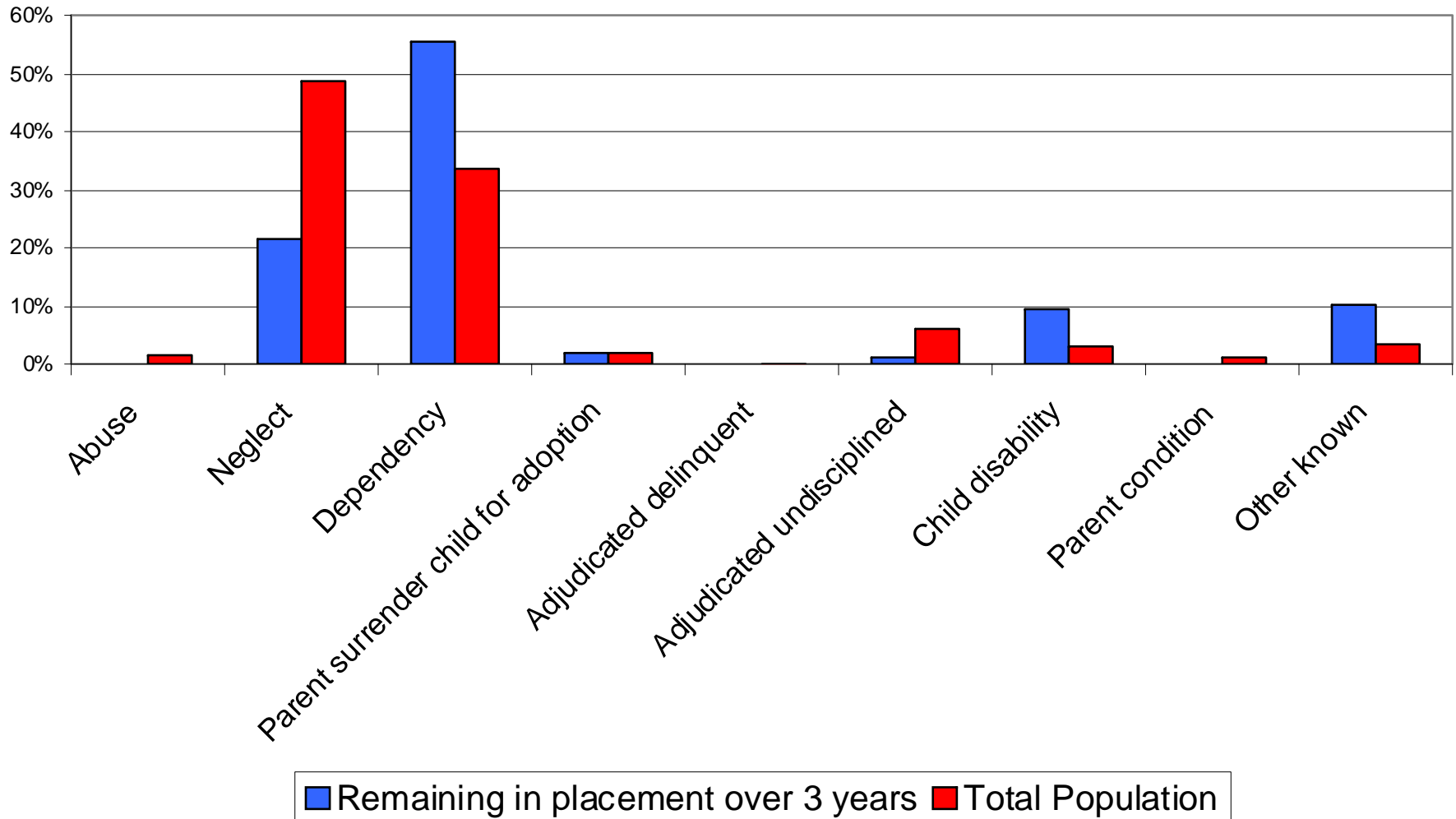


birth - 1 2 - 5 years 6 - 8 years 9 - 11 years 12 - 14 years 15 - 17 years

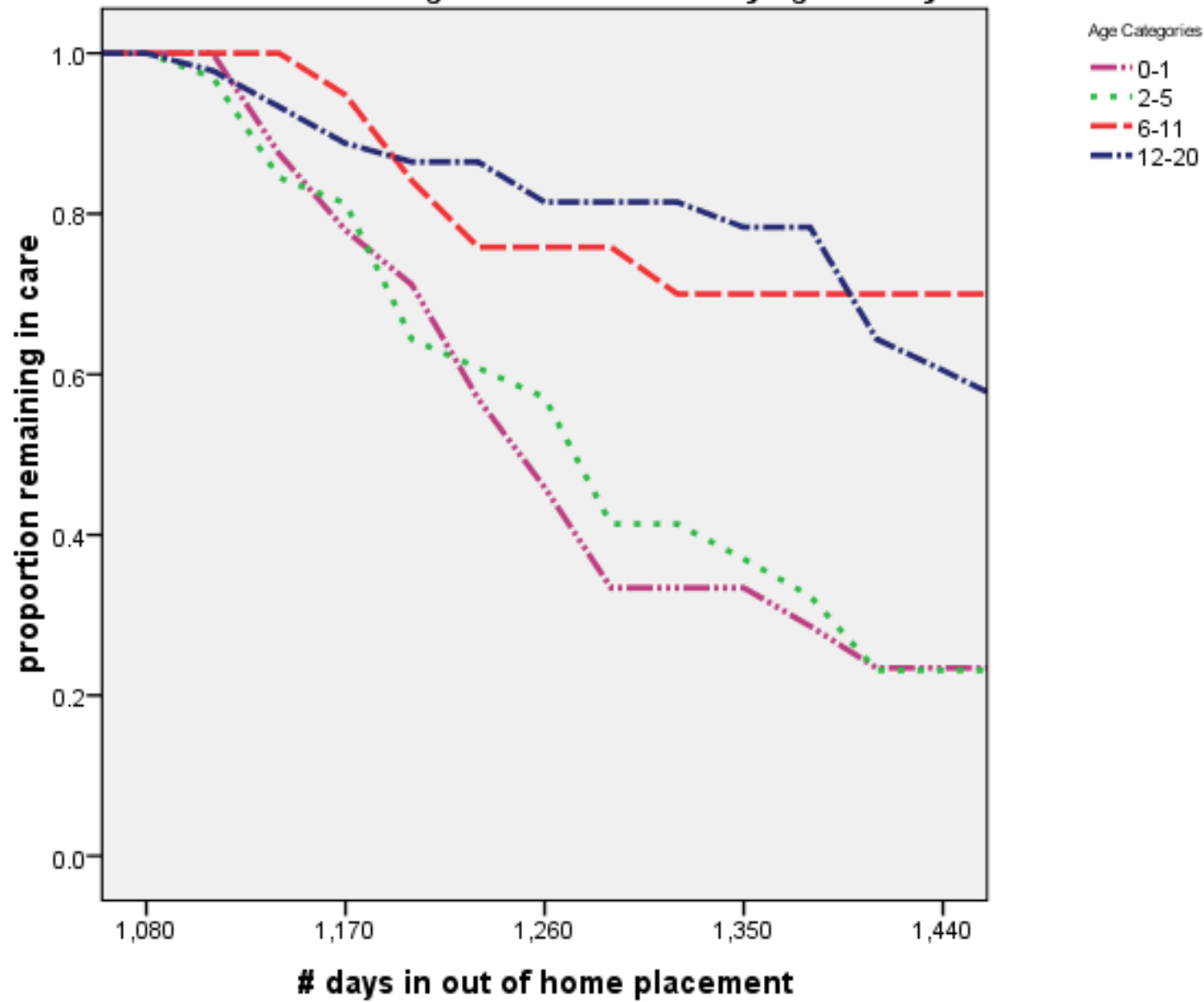
Percentage of Children in Care Remaining in Placement over 3 Years

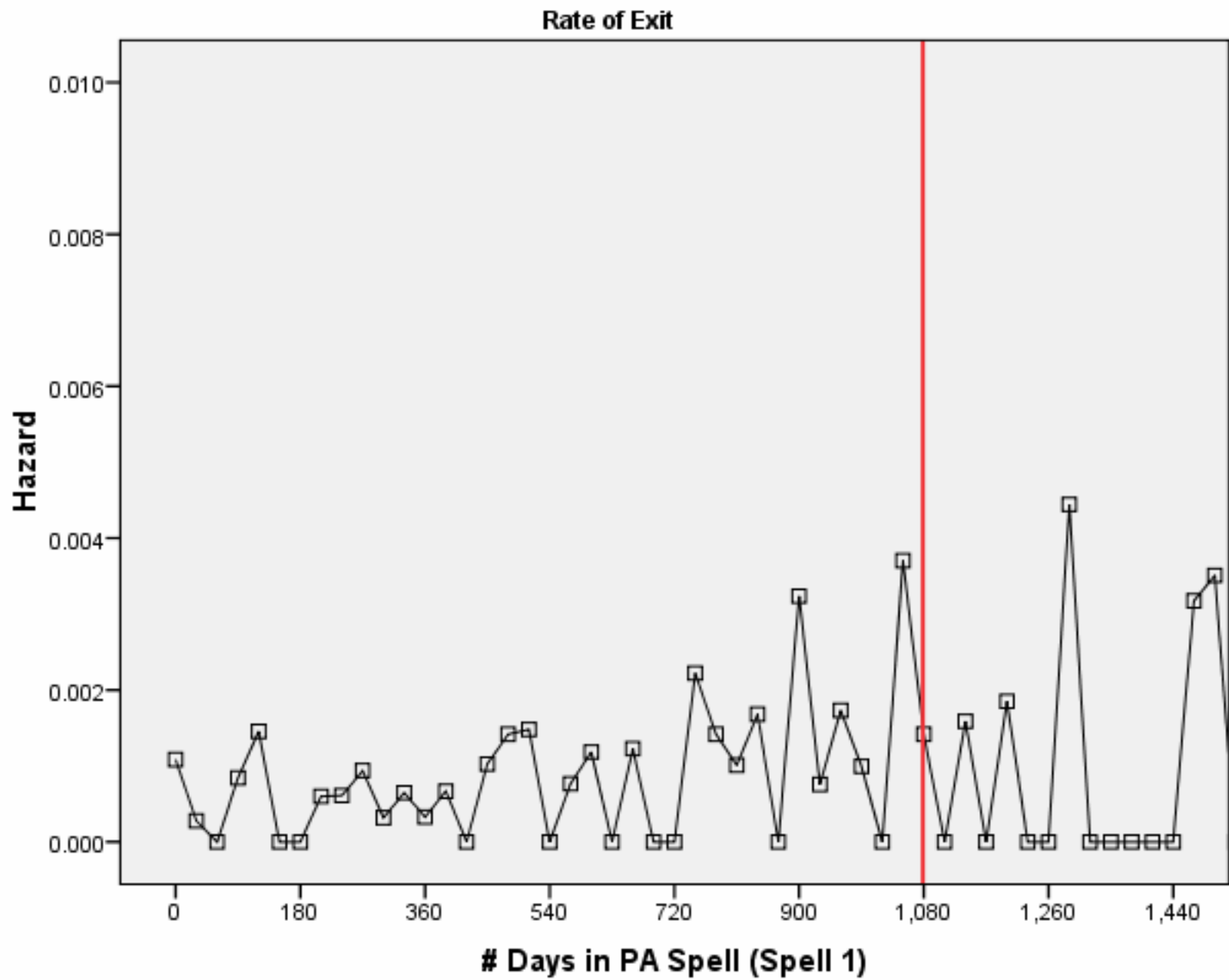


Percentage of Children Remaining in Care for Over 3 years by Reason for Placement



Timing of Exit after 3 Years by Age at Entry





Identifying “Permanency” Groups with Data

Length of Stay Groups

- Less than 1 month in placement – “short stayers”
- Between 1 week & 12 months
- Between 13 -36 months
- Over 36 months – “stuck in care”

Permanency Options

- Maintain in own home?
- Reunification
- Reunification & Adoption
- ???????

3 Areas of Analysis

- Identify length of stay groups
 - Understand characteristics of children in each group
 - Determine permanency destinations (each reasons) for each group
 - Do additional analysis to understand the 'why?' for each group
- Identify Group of Children who are "Long Stayers"
 - Determine time point at which 75% of children have exited placement
 - Understand characteristics of these children
 - Determine permanency destinations
- Analyze permanency status at 1 year, 2 years, 3 years for all children
 - Look at differences by age, race and gender

Permanency Status at:

Age at Entry	1 year Reunity			Age at Entry	2 years Reunity			Age at Entry	3 years Reunity/		
	Entry Group	/guardianship	Adoption		Entry Group	/guardianship	Adoption		Entry Group	guardianship	Adoption
All ages	2000	15%	1%	All ages	2000	33%	10%	All ages	2000	34%	24%
	2001	22%	1%		2001	35%	16%		2001	38%	23%
	2002	17%	0%		2002	31%	10%		2002	35%	21%
	2003	18%	1%		2003	31%	12%		2003	39%	25%
	2004	25%	0%		2004	42%	9%		2004	49%	20%
	2005	17%	1%		2005	32%	6%		2005	NA	NA
	2006	17%	0%		2006	NA	NA		2006	NA	NA
	2007	NA	NA		2007	NA	NA		2007	NA	NA

Reunification Status

	1 year	2 years	3 years
Reunification all Children			
2004	25%	+17%	+7%
2005	17%	+15%	
2006	17%		
Reunification – White children			
2004	26%	+20%	+2%
2005	23%	+9%	
2006	24%		
Reunification – Black children			
2004	23%	+14%	+12%
2005	15%	+17%	
2006	13%		

Total Reunification At 3 years



49%

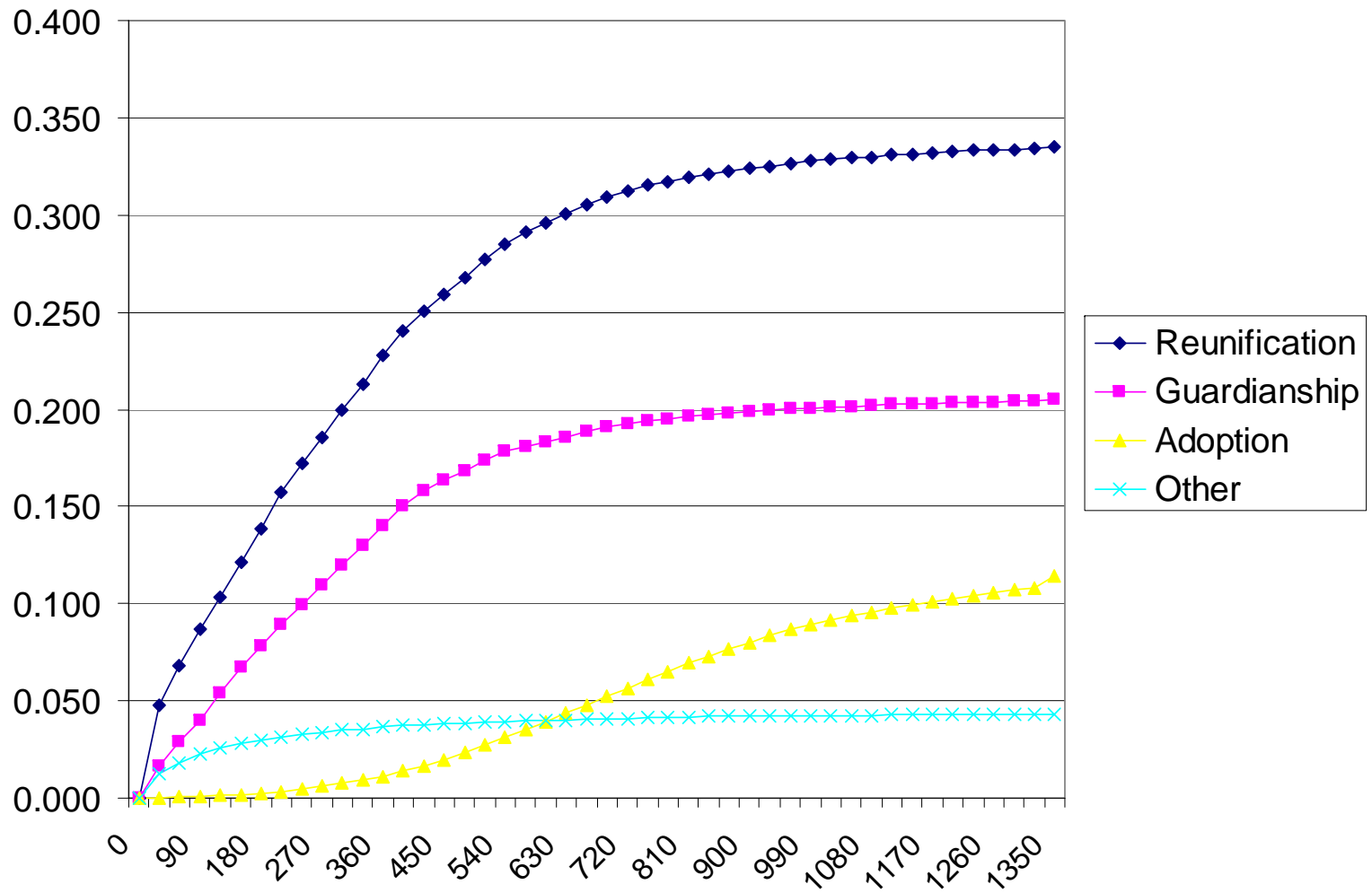


48%

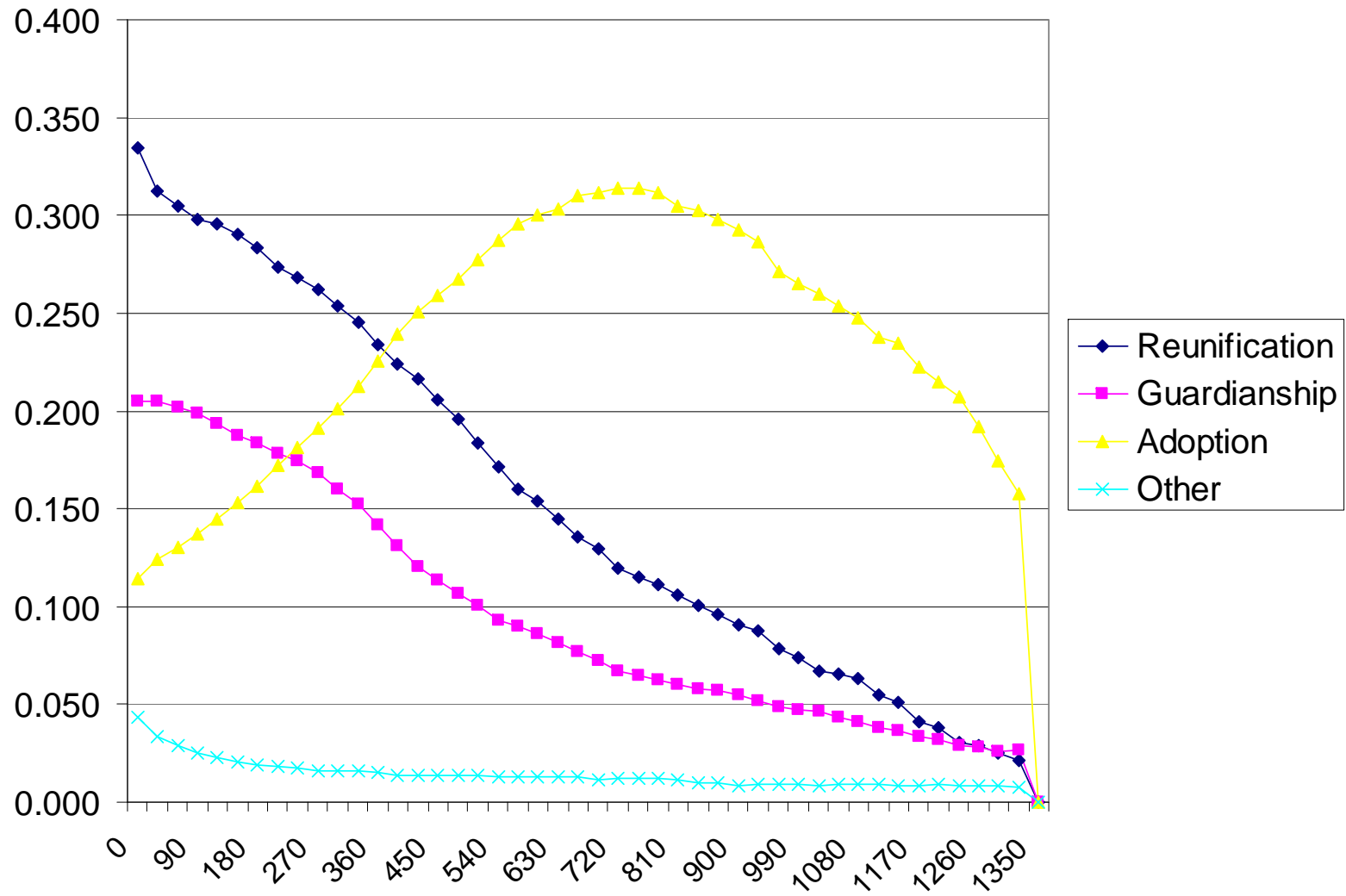


49%

Cumulative Probability of Exit



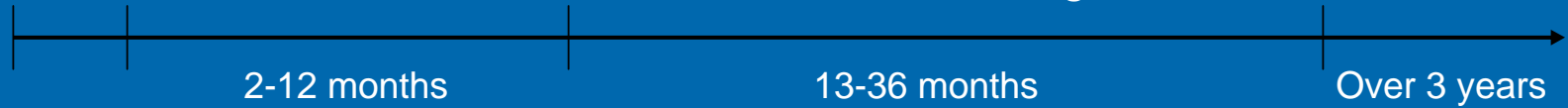
Eventual Probability of Exit



Pathways to Permanency Worksheet

Quantitative Data from Existing Datasets

Time frames for exit:

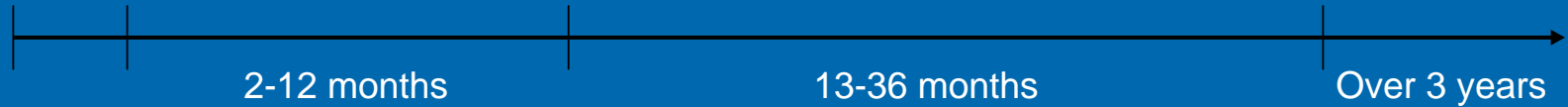


How many?				
Who? Summarize child characteristics of those exiting				
Age				
Race				
Gender				
Who? Summarize family characteristics for children exiting				
Drug involved?				
What did we do? Summarize agency actions for children exiting				
1 st placement?				
N'hood placement?				
Sibs together?				

Pathways to Permanency Worksheet

Qualitative Data from Other Data Sources

Time frames for exit:



How many?				
Who? Summarize child characteristics of those exiting				
Age				
Race				
Gender				
Who? Summarize family characteristics for children exiting				
Drug involved?				
What did we do? Summarize agency actions for children exiting				
1 st placement?				
N'hood placement?				
Sibs together?				

Practice Interventions